

# ELECTRIC BICYCLES SERVICE

## TO WHOM IT IS ADDRESSED

**Users of ALBA Synchrotron** can apply for an electric bicycle at the reception of Vila Universitària to move **between Vila Universitària-Hotel Campus and ALBA Synchrotron**. Electric bicycle is a complementary transport to the shuttle available at fixed hours between the two places.

**This service can be used by users of ALBA Synchrotron staying at both Vila Universitària and Hotel Campus.** The researcher who requests the service will receive a magnetic key, which works by proximity, to raise the parking barrier. Also, a key to enter the locked place where electric bicycles are kept (in the parking lot of Vila2) and a helmet will be given to the user.

## USAGE CONDITIONS

- The **schedule** to request bicycles at the reception of Vila Universitària is **from Monday to Friday, 24 hours**; neither requests nor deliveries are made at weekends. Users arriving at weekends may not request the bicycle until Monday morning, except if they already know the service and reserve it in advance.  
Information: 93 581 7004, [vila@vilauniversitaria.com](mailto:vila@vilauniversitaria.com).
- **Personal data** will be requested to the users to obtain the bicycle, keys and helmet. This data will be destroyed when this material is returned. There is a record of all users using bicycles.
- **The use of bicycles is restricted to move inside the Campus and to go to ALBA Synchrotron and back to the Campus.**
- The **parking areas** for bicycles are the parking lot at Vila2 and the one located near the security checkpoint in the access area of ALBA. It is recommended to put the fixed lock in the rear wheel whenever the bicycle is parked (all of them have easel) and take the key.
- It is recommended to leave the batteries plugged in for **recharging** when parking the bicycle in the parking lot of Vila2. Thereby, it will be ready for the next user. Bicycle should be left in the same conditions you would like to find it.
- If for any reason (injury, rain, snow, etc.) **user returns with the shuttle** and leaves the bicycle in ALBA Synchrotron, he must inform the reception of Vila Universitària.
- **From Monday to Friday and during weekends (from 22:00h to 8:00h)**, the button next to the last column should be pressed to open the access metal door **in order to leave the parking lot of Vila2**. The magnetic key that raises the parking barrier also opens the metal door in order to enter the parking lot during these hours.
- **There are 7 bicycles available to researchers, one for each beamline (numbered from 1 to 7).** Therefore, researchers of each beamline have preference. However, if there are free bicycles or beamlines without users, they may be used. Check their availability at the reception of Vila Universitària.
- In all cases it is recommended **to enter and leave the parking lot** with the magnetic key, waiting the lift of the barrier: parking control system requires an entrance followed by an exit and does not allow two consecutive entrances or exits.

## OPERATION OF THE BICYCLE

- **The electric bicycle requires pedalling to go**, but in sloped areas or when the speed is low, the engine of the bicycle helps movement. There is a gearshift in the handlebar, from which the user can choose the most appropriate gear: up, down or flat.
- Since bicycle size is standard, **saddle height should be adjusted to suit user's height**, simply by loosening the screw that regulates the seat post to raise or lower it. It is a quick release that does not require any key.
- **All bicycles have lights.** They are switched on with the buttons on the screen of the handlebar.

## ROUTE MAP

- Together with the keys and the helmet, user will receive a small laminated map with the way to get ALBA Synchrotron. Users can contact the reception or security staff if they have questions about the route to follow.
- There is a cycle lane between ALBA Synchrotron and Vila Universitària except for a particular stretch. **Users must always ensure to cycle with caution taking into account traffic rules.**

**Thanks for using a healthy, ecological, sustainable and very economical means of transport, with no smoke emissions, which helps us to respect the environment.**



Vila Universitària

UAB CAMPUS



Hotel Campus

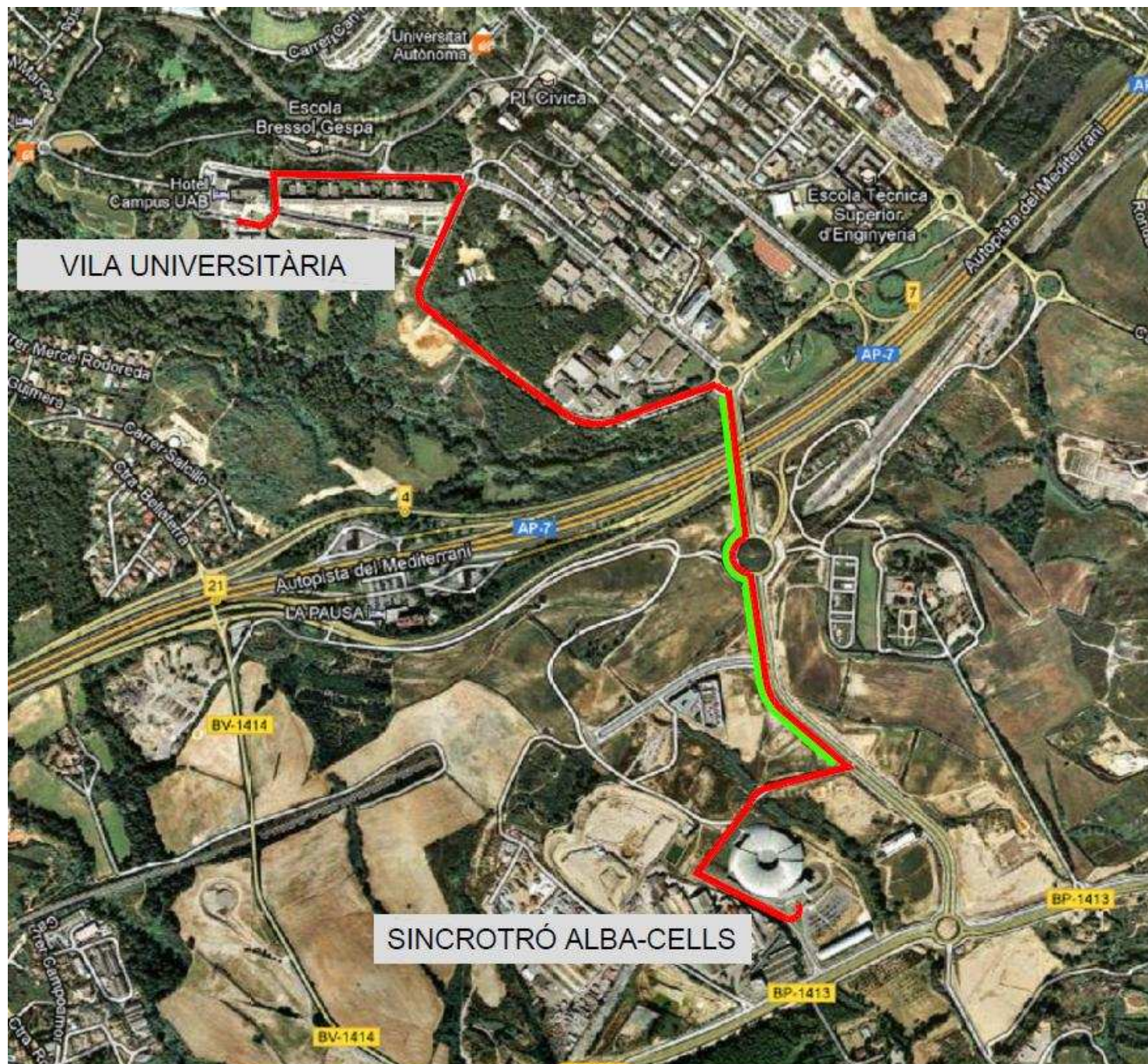
UAB CAMPUS







## ALBA – Guesthouse Bicycle Route Map



— RUTA ACONSELLADA

— CARRIL BICI