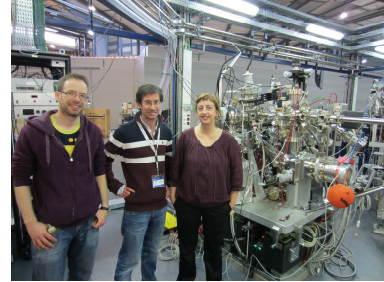
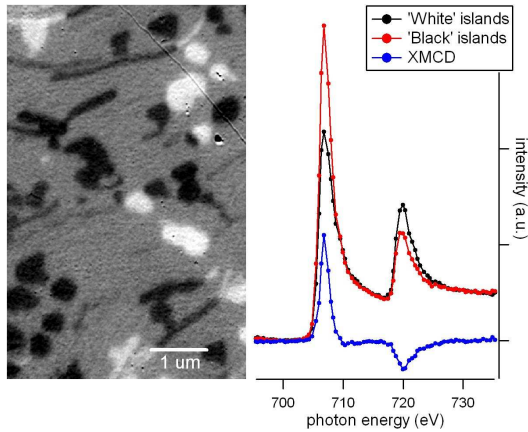


## Magnetic spectromicroscopy on submicrometer islands

Together with researchers from IMDEA Nanoscience and Universidad Autónoma de Madrid, the CIRCE scientists obtained full XMCD-PEEM spectra from submicroscopic objects: Fe islands grown in situ on a W(110) substrate.



**Left:** XMCD-PEEM image at the  $\text{FeL}_3$  edge energy showing white/dark contrast where the magnetization is parallel/anti-parallel to the beam direction, obtained by subtracting images with opposite circular polarizations. **Center:** (red and black) Fe L-edge spectra from both island species obtained by XMCD spectromicroscopy (acquisition of an image stack while scanning the photon energy) and their difference or magnetic dichroism (blue).